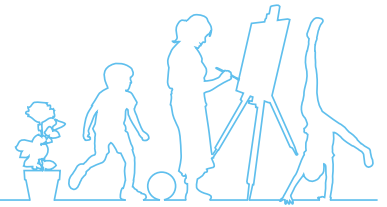
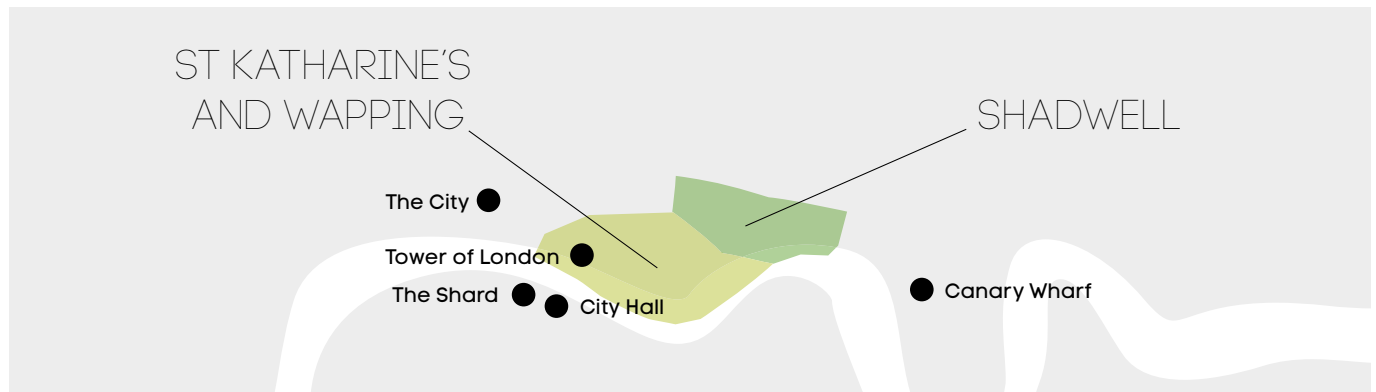


2017 LONDON DOCK COMMUNITY FUND



The London Dock Community Fund, set up by St George City and managed by East End Community Foundation (EECF), aims to make the local area around the London Dock development a better place to live, work and visit. It offers grants to support local community organisations in the council wards of St Katharine's and Wapping and Shadwell.

EECF is dedicated to improving the quality of life and opportunities for people living in the East End. By funding grass roots organisations and directly delivering projects we aim to raise educational achievement, enhance employability and increase social cohesion. Our deep understanding of the needs of local communities and unique partnership with residents, frontline services and businesses enables us to provide targeted support and create real lasting change.



HOW MUCH MONEY IS AVAILABLE?

The total value of the fund is £18,000 per year.

£1,500 has been allocated to Small Grants where organisations may apply for up to £500.

£16,500 has been allocated to the Summer Programme where organisations may apply for up to £3,000.

Applicants must be able to demonstrate that the activities will be for the benefit of communities in the wards of St Katharine's & Wapping and Shadwell, that they will involve local people and that the benefits and outcomes are clear.

SMALL GRANTS

What are the grants for?

Grants will generally cover one-off items of expenditure such as social outings, classes or training. To ensure funding is distributed fairly, EECF has limits for certain types of grants:

- A maximum of £250 is available per day trip or social event
- A maximum of £30 per hour for tutor costs (i.e. exercise, language, arts tutor). EECF also expects participants to make some contribution towards the social activities that they will be benefiting from.

Applications for gardening or environmental projects, as well as projects which provide employability skills for local residents are actively encouraged.

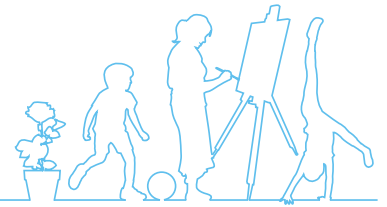
How do I apply for funding?

East End Community Foundation's Small grants application form is available from our website www.eastendcf.org

Alternatively if you need a paper copy, please contact the EECF Grants Team with your address on 020 7345 4444 or email grants@eastendcf.org

Timetable

A decision will normally be available within eight weeks of the application deadline. The application deadline is 12 noon on 27 February 2017.



SUMMER PROGRAMME

What are the grants for?

The London Dock Community Fund will support organisations that offer quality summer provision for children and young people. The Summer Programme grants are for projects which have a significant impact on improving motivation and engagement with education and work readiness; increase personal development; increase access to new cultural experiences; and / or reduce the likelihood of antisocial behaviour.

Grants are available to quality projects which:

- Provide positive activities in the summer holidays for children and young people from St Katharine's and Wapping and Shadwell
- Demonstrate attractive provision designed to stimulate interest in new activities and has been designed in consultation with young people
- Are inclusive and bring young people from different communities together
- Work in partnership with other providers in order to increase capacity and avoid duplication of services

Project activities could include, but are not limited to:

- Access to the arts and new cultural experiences
- Activities that engage young people with their local community
- Sports provision and tournaments
- Courses that offer accreditation, development of social skills etc.
- Evening or weekend youth provision for older young people

How do I apply for funding?

The deadline for submitting expressions of interest is 12 noon on 27 February 2017. Shortlisted organisations will be contacted in March 2017 to submit final applications.

Please contact the EECF Grants Team on 020 7345 4444 or grants@eastendcf.org for an expression of interest form.

Timetable

A decision will normally be available within eight weeks of the application deadline. The application deadline is: 27 February 2017

APPLICATION PROCESS

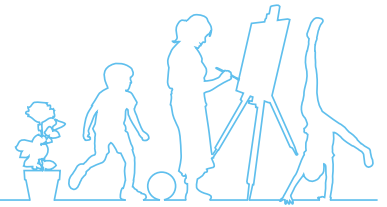
Applicants must submit their application form and supporting documents by 12 noon on the application deadline date. The applications will be reviewed by the EECF Grants Team for compliance with these guidelines and will then be assessed by the Grants Committee.

GRANT PAYMENTS

Grant payments are made by BACS so applicants must have a bank account in the name of the organisation. The account must have at least two signatories who are unrelated.

EQUAL OPPORTUNITIES

EECF is committed to equal opportunities for all, and we expect groups and organisations applying for grants to show that they are aware of equal opportunities, and can demonstrate commitment to them. Accordingly, organisations applying for grants for the first time are required to submit their Equal Opportunities Statement with their application.



WHO CAN APPLY FOR FUNDING?

To be eligible to apply, organisations must:

- be a not-for-profit organisation that is formally constituted i.e. have a signed governing document in the group's name
- be connected with and meeting the needs of the local community in St Katharine's & Wapping and Shadwell
- have at least two unrelated management committee members if they are an unincorporated organisation or voluntary group
- have good financial management procedures, including a record of income and expenditure
- have a bank account in the name of the group, with at least two unrelated cheque signatories
- have a safeguarding policy in place if working with young people and children under the age of 18 or vulnerable adults, where applicable

Applications from organisations that have a financial deficit will not be considered.

WHAT TYPES OF ACTIVITIES CANNOT BE FUNDED?

London Dock Community Fund will not fund:

- Expenditure or activities that have already taken place. By this we mean that retrospective funding will not be awarded; applications may be for on-going provision
- Services which are a statutory responsibility (e.g. are the responsibility of the Council, Government or Health Authorities)
- Projects that have no community or charitable element i.e. commercial ventures
- Core project costs e.g. the general administration costs
- Projects that take place outside of the target area. If the proposed project is taking place just outside the area but is still benefiting residents within it, contact EECF to discuss whether this would be eligible
- Projects that are purely for the advancement of religion or politics
- Foreign travel
- Mother tongue classes
- Activities where people are excluded on grounds of religious beliefs, ethnicity, gender, sexual orientation or disability

East End Community Foundation does not make grants to individuals.

MONITORING

If your application is successful, you must be able to spend the money within 12 months of the grant being awarded.

You will need to keep financial records of how the grant is spent including receipts and invoices for expenditure, and submit these to East End Community Foundation in accordance with the monitoring timetable indicated within the grant offer letter.

You will also be required to keep records of how many people benefit from the project or activities where appropriate, and the difference the project has made to them. These pieces of information must be submitted in East End Community Foundation's monitoring form and end of grant report form.

The contribution of East End Community Foundation and the London Dock Community Fund must be acknowledged in any promotional literature or annual report issued on your behalf within twelve months of receiving the grant or any instalment of the grant. Copies of such material must be supplied to East End Community Foundation free of charge.

We reserve the right to use any photographs or details of the project in any future literature and/or promotion.